



YOUR OWN PRIVATE HEAVEN

\$249,900

241 Patricia Lane, Sequim, WA 98382

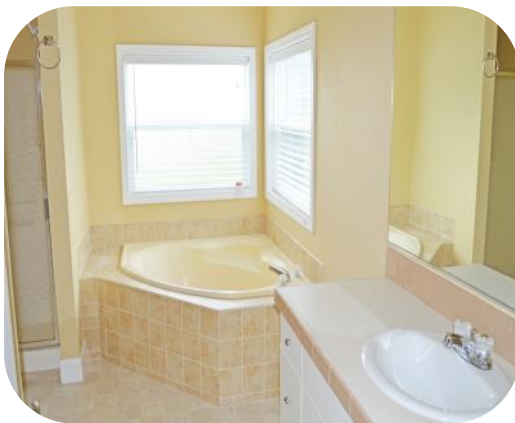
Welcome home to your own private bit of heaven. This “like new”, 2001 built home sits on 1.260 acres just walking distance to the Dungeness River, Olympic Discovery Trail and not far from charming downtown Sequim. This 3 bedroom, 2 bath home boasts large light filled rooms and an open floor plan. With formal living room, family room, dining room and open kitchen with large pantry, there is plenty of room for all. There’s even a free standing wood stove to keep everyone toasty warm on cold winter nights.



VIJYA & ASSOCIATES
Real estate. Real relationships.
www.vijya.com • 206.418.6260

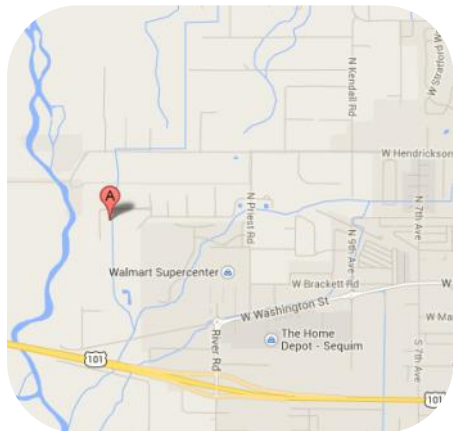
Please turn over 





\$249,900

241 Patricia Lane, Sequim, WA 98382



Sequim, WA and Dungeness River

- Features:**
- ◆ 3 bdr / 2 baths
 - ◆ Year built: 2001
 - ◆ 1772 sf
 - ◆ 2013 taxes \$1,654
 - ◆ 1.26 acres
 - ◆ Greenhouse, shop, Outbldgs.
 - ◆ 2014 taxes \$2,190
 - ◆ MLS # 679768

The large, private master suite is at one end and includes a soaking tub and separate shower. Two additional bedrooms are at the opposite end of the home along with a second full bath. There are vaulted ceilings throughout the home and two skylights.

Outside you will find all the room you could want in a large fenced back yard with greenhouse, shed, huge workshop and carport just waiting for you. The front yard has a drip irrigation system for the flower beds and plenty of parking. The property has fruit trees and raised planting beds.

Private well for water. There is plenty of room to enjoy the country life while still being close to Sequim!



VIJYA & ASSOCIATES
Real estate. Real relationships.
 www.vijya.com • 206.418.6260

Vijya Patel — Madison Partners
 (206) 418-6260
 vijya@vijya.com
 www.vijya.com

